



ARTWORK AUCTION

FEATURING ARTWORK FROM THE LYNDA STOFAN COLLECTION

GLYNDWR WELSH TERRIER CLUB IS HOSTING A SILENT AUCTION OF WELSH TERRIER ARTWORK

- All artwork are from The Lynda Stofan Collection – *many are signed!*
 - *Lynda Stofan was a long-time breeder of Welsh terriers known as Stonewall Welsh Terriers; she has partnered with GWTC to sell her collection of artwork so that these beloved items find homes among those who love Welsh terriers*
 - *Note that the signed prints are all of a low edition number, meaning the lower the number, the more valuable the print!*
- Auction will run from Monday, November 20th to December 4th
- A portion of the proceeds will be dedicated to the Bardi McLennan Memorial Fund, which will be used for annual donations made in our Founder's name
- How the auction works:
 - Once you select an item you would like to bid on, send an email with your item number and your bid to cdesantis@signava.com
 - If your bid is outbid, you will be notified to see if you'd like to counter-bid; this process will be repeated until a winning bid is determined
 - All winners will be notified by email; note that **PACKING, SHIPPING, AND HANDLING COSTS ARE ADDITIONAL** and will be determined based on the winner's location and the weight of the item. These charges can be avoided if the item is picked up at the GWTC Holiday Luncheon, which will be held on Saturday, December 9th in Scarsdale, New York, or if special pick-up arrangements are made with cdesantis@signava.com.
 - All items are being sold "as is"
 - Any questions? Email: cdesantis@signava.com

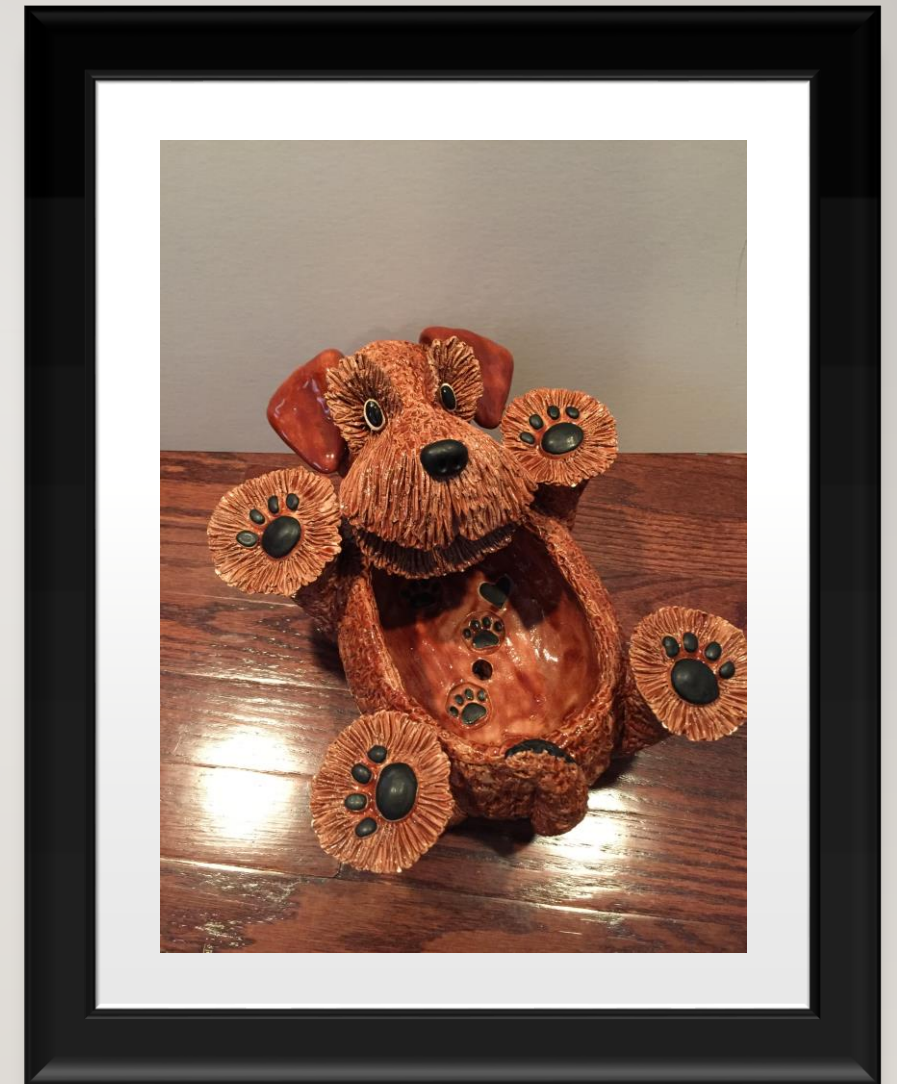
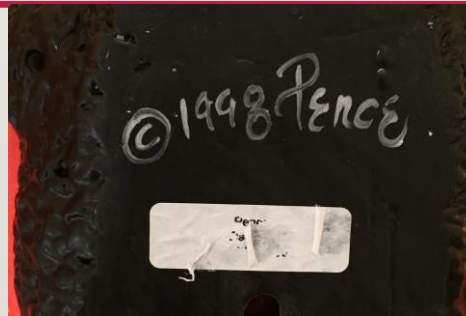
#1. WELSH TERRIER METAL SCULPTURE

- Opening bid: \$40
- This comical sculpture is near life size and quite heavy! It would make the perfect conversation piece in any Welsh terrier household
- It is solid metal that purposefully appears rust colored



#2. PENCE PETS WELSH TERRIER GLAZED CLAY PLANTER -- SIGNED

- Opening bid: \$50
- This is a signed and dated Pence Pets handmade Welsh Terrier glazed clay planter
- This is a ONE OF A KIND piece
- Planter is approximately 18" x 18" and weighs about 8 pounds
- Planter has a drainage hole in the center
- Welsh terrier has the classic black and tan markings



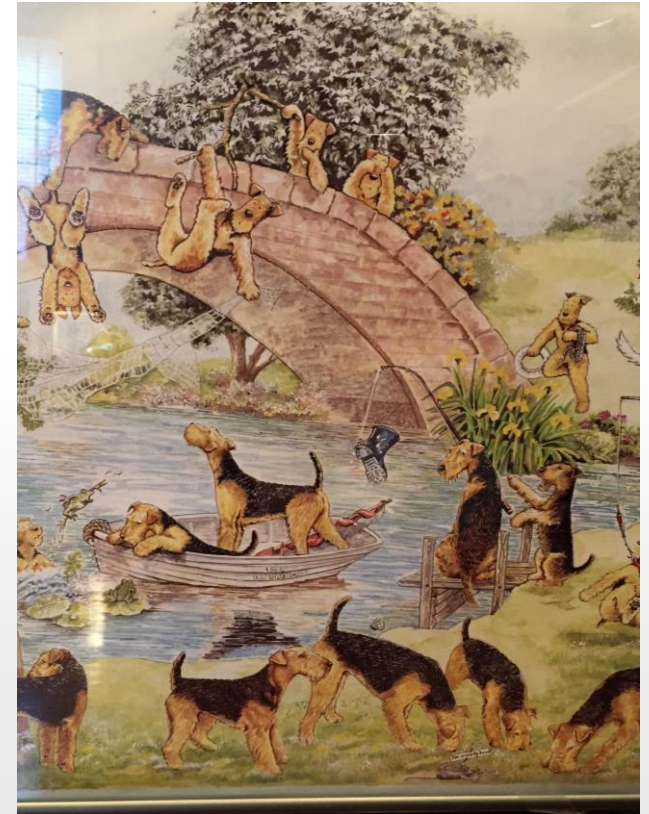
#3. MARY BEACON PRINT OF “MISCHIEF & MAYHEM”

- Opening bid: \$40
- From her studio in Virginia, many have come to know artist, Mary Beacon, as a respected and collected canine artist, most notably known for her depiction of dogs in oil on canvas.
- Print is 14 x 12 framed; note the glass is cracked and would need to be replaced, but frame is in perfect condition
- Print is not signed



#4. FROLICKING AIREDALES

- Opening bid: \$15
- This 16 x 20 framed print is of comical Airedales (but they do look like Welsh terriers, don't they?)
- It's super cute and framed



#5. PORTRAIT OF A WELSH TERRIER BY J PRUNEAU

- Opening bid: \$40
- This print is from 2003 and perfectly captures the charm of the breed
- Framed 24x19



#6. MARY BEACON PRINT “YOU’RE SITTING IN MY CHAIR”

- Opening bid: \$40
- This 2001 print by Mary Beacon charmingly portrays a Welsh terrier checking out a teddy bear
- Ornately framed, the print is 22 x 18



#7. STEVE NESBITT LIMITED PRINT OF “THE VISITOR” - SIGNED

- Opening bid: \$50
- Steven Nesbitt gained his Fine Art B.A. (Hons) Degree in 1985 at Portsmouth. Since 1990 he has worked as a professional artist, and has specialized in painting dogs. He has painted a large variety in that time. His limited edition prints cover eighty plus different breeds, and have been collected in twenty countries.
- Limited edition #32 of 250
- Signed
- Framed print is 22x19



#8.VAN LOAN LIMITED EDITION PRINT SIGNED

- Opening bid: \$60
- Martha Van Loan was born in 1942 in Morristown, New Jersey. She is known for new realist painting-dogs and horses, illustration and commercial art.
- Signed limited edition print #23 of 200 from 1987
- Framed 23x18



#9. MARY BEACON “DOG LOOKING IN MIRROR”

- Opening bid: \$40
- This gorgeously framed and matted Mary Beacon print from 2000 features a couple of curious Welsh terriers mesmerized by a mirror
- Framed 15x18



#10.VAN LOAN LIMITED EDITION SIGNED PRINT

- Opening bid: \$60
- Limited edition #23 of 300 from 1990
- Signed by the artist
- Framed 21x17



#11. JULIA JORDAN RARE PRINT OF CH CORAILS DOWNHILL RACER

- Opening bid: \$40
- This is an extremely limited print of Ch Corails Downhill Racer, commissioned by the breeder
- Completely unique artist style
- Framed 20x15



#12. LYN ST CLAIR STUBBS SIGNED PRINT “WHAT KITTY?”

- Opening bid: \$75 (Note: Signed limited prints by this artist typically sell for over \$80!)
- Lyn St Clair Stubbs began her professional career at age 12, when she started selling portraits "from life" of horses and dogs. In 1983, she began self-publishing limited edition prints of her pen and ink drawings and by 1994 had created over six hundred different prints that could be found in collections worldwide.
- This is a signed limited edition print #43 of 175, signed by the artist
- UNFRAMED
- Matted at 20x16



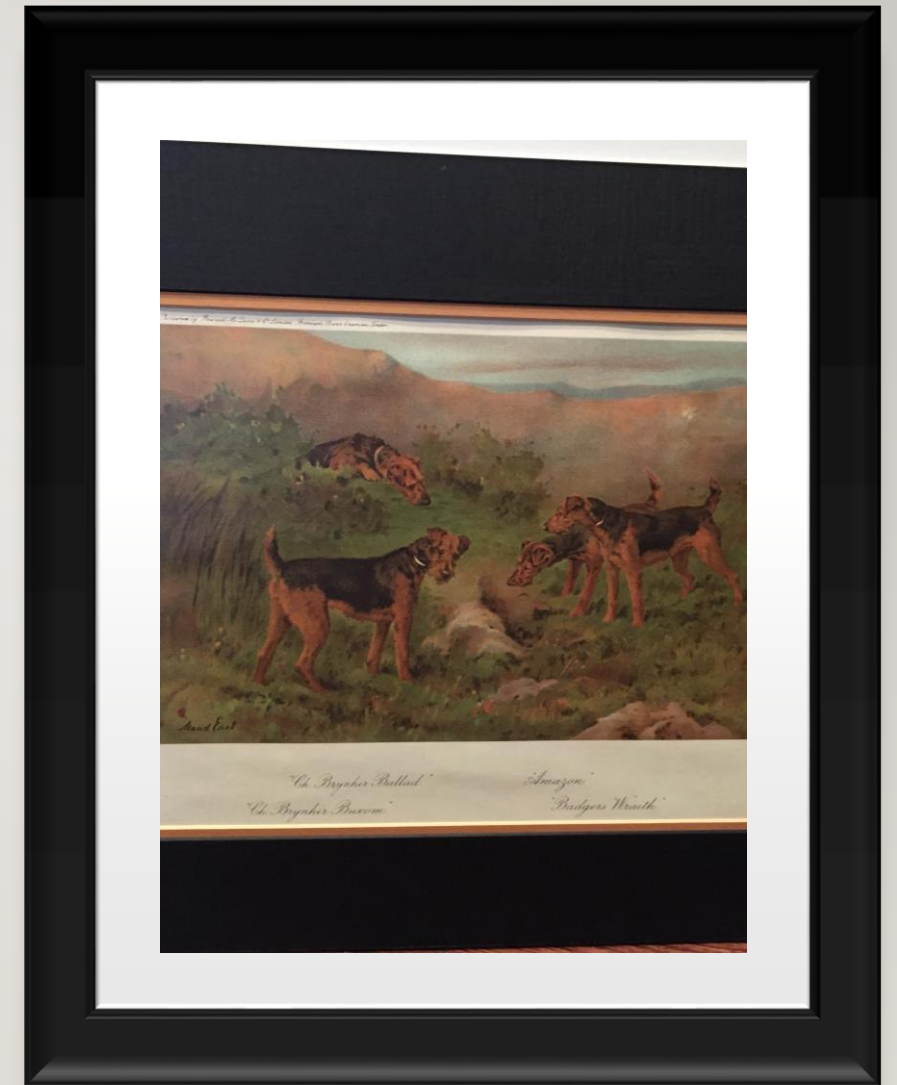
#13.LYN ST CLAIR STUBBS SIGNED PRINT

- Opening bid: \$75 (Note: Signed limited prints by this artist typically sell for over \$80!)
- Signed limited edition print #16 of 175
- Framed and matted 21x17



#14. MAUD EARL ILLUSTRATION

- Opening bid: \$40
- Maud Alice Earl (1864-1943) was an eminent British-American canine painter. Her works are much enjoyed by dog enthusiasts and also accurately record many breeds. Maud Earl died in New York in 1943 and is buried at Sleepy Hollow Cemetery in Sleepy Hollow, New York.
- Each Welsh terrier in the illustration is named
- Unframed but matted at 20x16



#15. LYN ST CLAIR STUBBS LIMITED EDITION SIGNED PRINT

- Opening bid: \$75 (Note: Signed limited prints by this artist typically sell for over \$80!)
- Limited edition #29 of 175, signed by the artist
- Framed and matted at 19x22



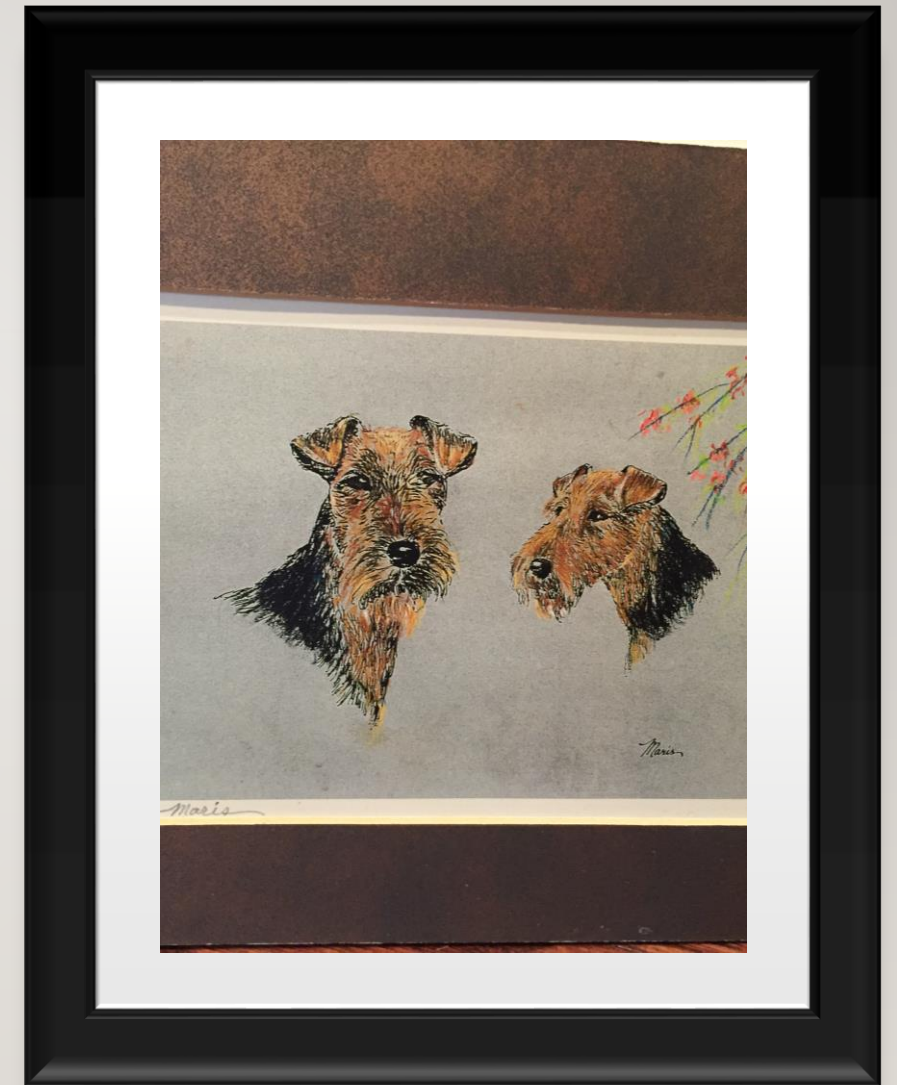
#16. FOUR TERRIERS

- Opening bid: \$15
- The four terriers in the illustration are named (breed names), one of which is the digging Welsh terrier
- Sold unframed; image is 8 x 10



#17. MARIS SIGNED PRINT

- Opening bid: \$15
- Charming color print signed by the artist
- Unframed; image is 8x10



#18. MARY BEACON “LOOKING FOR TROUBLE”

- Opening bid: \$40
- Print is framed, unsigned 14x12



#19. ARTHUR WARDLE PRINT FROM 1894

- Opening bid: \$40
- Arthur Wardle (1860-1949) was an English painter. Born in London, aged just 16, he had a piece displayed at the Royal Academy. His career was highly successful and his works continue to be sought after. He remains one of the widely known dog painters of the 19th and 20th centuries, and he is particularly known for his paintings of terriers.
- This print is from a painting made in 1884
- Matted but not framed; 9x12



#20. MAUD EARL PRINT

- Opening bid: \$15
- This is a unique print; in the right frame, it would become the center of attention in any home
- Unframed, unmated 11x14



#21. MARY BEACON WELSH TERRIER PORTRAIT

- Opening bid: \$15
- This print almost looks like a needlepoint
- Matted approximately 11x14; image is smaller

